

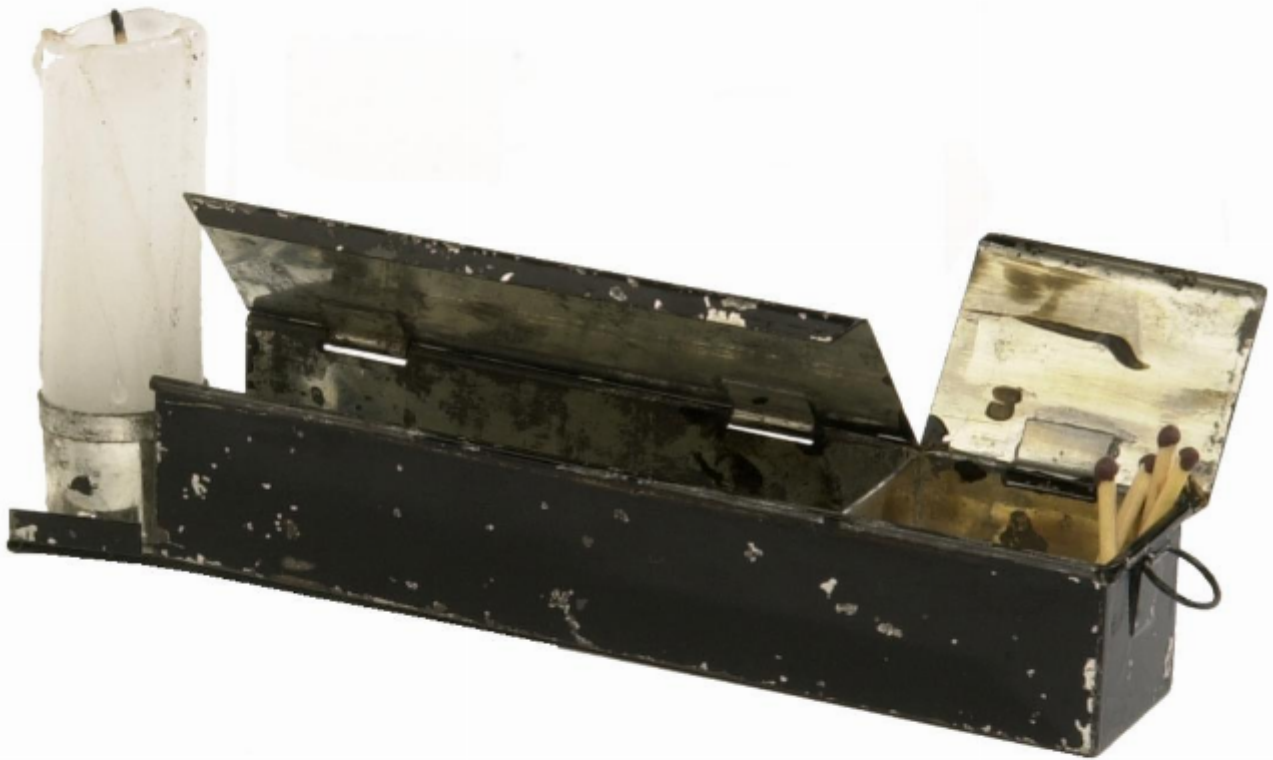


Christopher Clarke Antiques

Dealers in Campaign Furniture  
& Travel Items

## Tin Travel Candlestick

Sold



©Christopher Clarke Antiques

REF: 6145

Height: 3 cm (1.2")

Width: 14.5 cm (5.7")

Depth: 3.5 cm (1.4")

## Description

As can be seen a candle folds out of this japanned tin box, once the lid is opened. When the lid is closed again the candle is kept in an upright position and the box forms a handle. A second compartment at the end of the box contains vestas and there is a strike area on the side of the box. A comparable candlestick by Whipple was patented in 1867. An interesting variant on the travel candlestick. Third quarter 19th century. Box size is given.